

Shapwick Place, Ingleby Barwick



£179,995





Built to the ever popular Persimmon 'Souter' design, a property that appeals to wide variety of buyers, delivering space across three levels, with a particular feature being the three, generous double bedrooms.

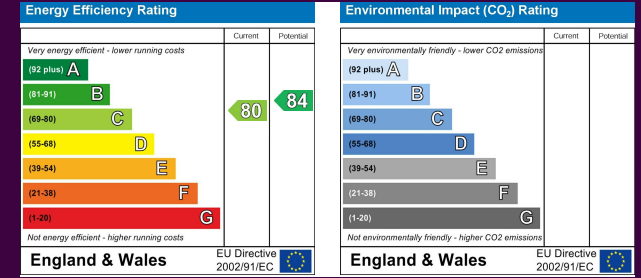
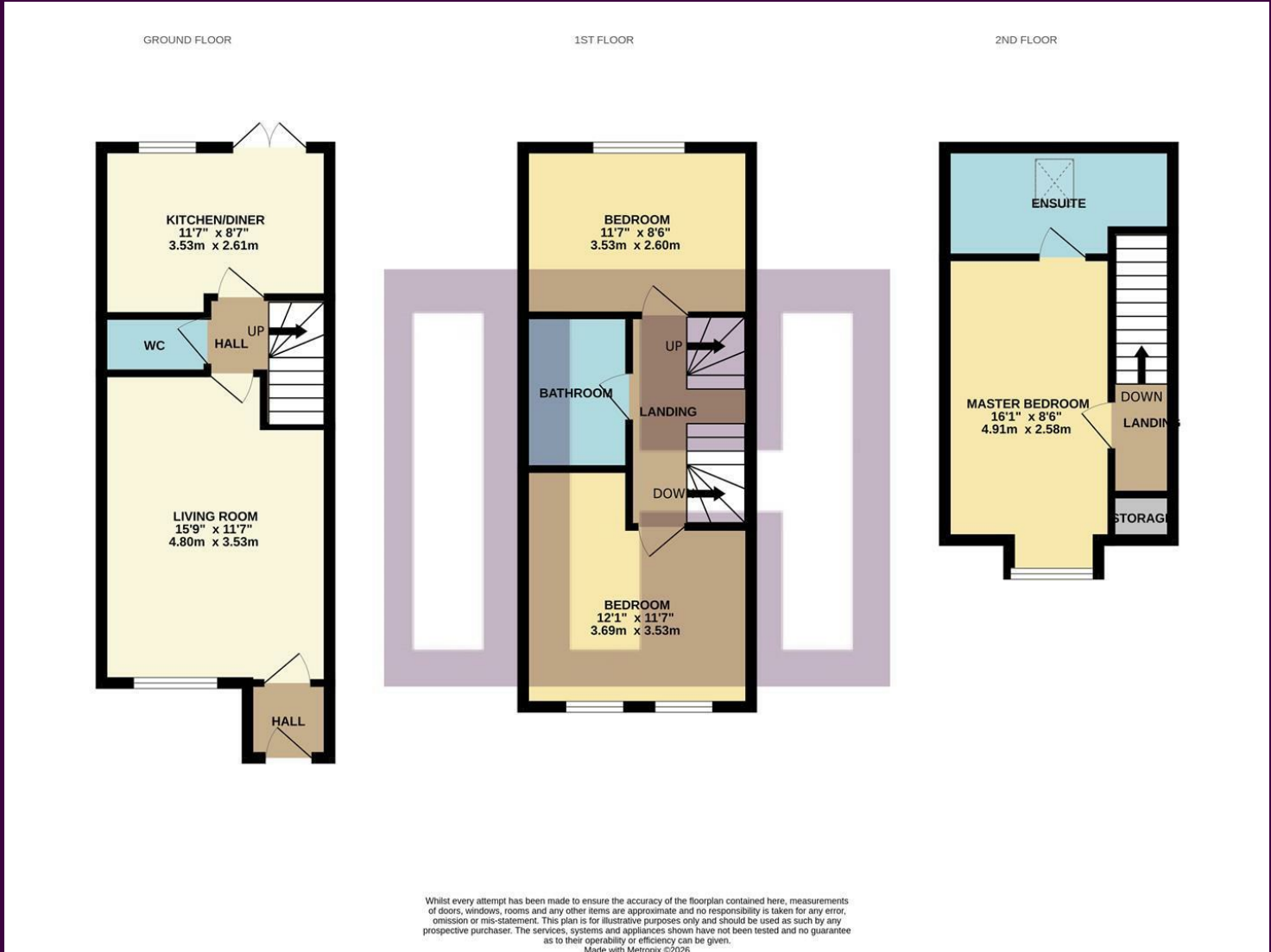
Situated within the favoured Rings development of Ingleby Barwick, whilst enjoying a landscaped, westerly facing rear garden, with near end patio, artificial lawn and timber shed - all fence enclosed. With an allocated parking bay to the front, and additional visitor bays.

Available with 'No Forward Chain' - early viewing is advised.

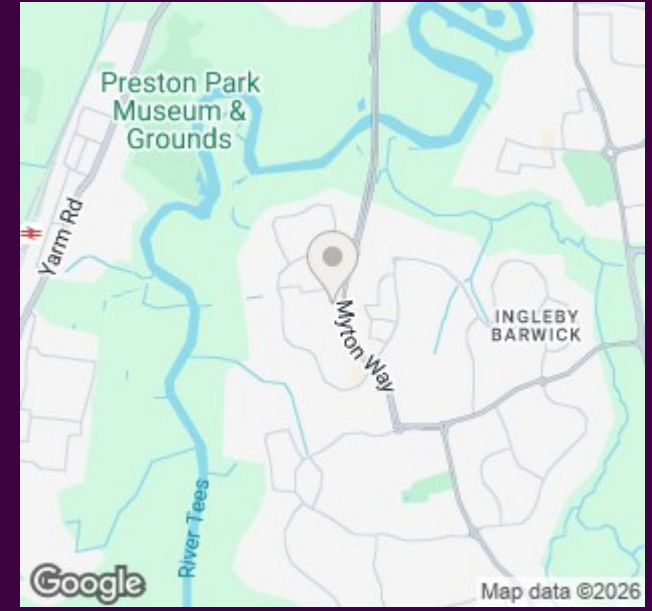


Briefly, the accommodation comprises an entrance hall, lounge, inner hall, cloakroom/WC and kitchen/diner to the ground floor. The first floor bringing two of the double bedrooms, with a modern family bathroom in-between. The 'Master' bedroom sits on the second floor, enjoying a modern ensuite.

The Layout



The Location



Council Tax Band:
Tenure:

C
Freehold



- Modern, three level townhouse
- Three generous double bedrooms, 'Master' with ensuite
- Westerly, low-maintenance landscaped garden
- Available with 'No Forward Chain'
- Rear kitchen/diner with 'French' doors to the garden
- Allocated parking bay and additional visitor spaces